

XtroLiner

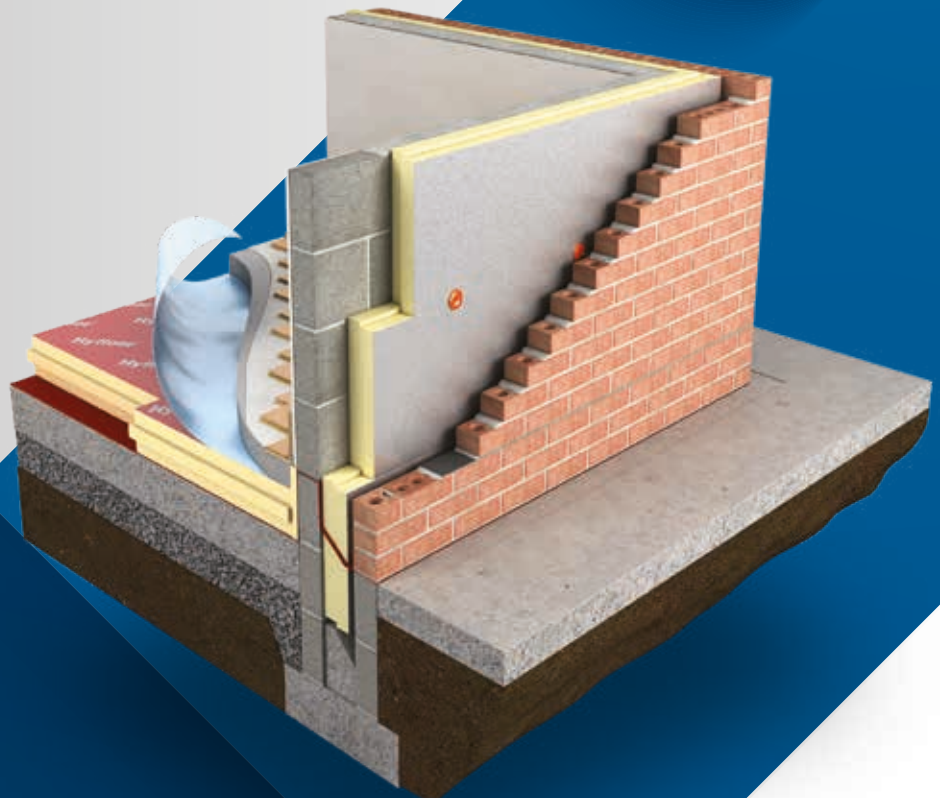
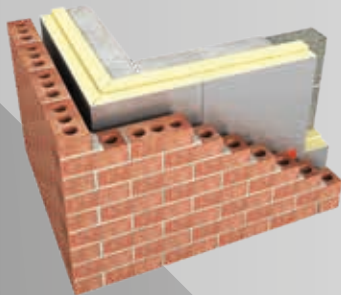
Superior Performance PIR Insulation



Innovative
Products

Walls

XtroWall Plus 110 Insulation for Partial Fill Cavity Walls



PLATINUM
SERVICE

Xtratherm[®]

More than insulation

IMPROVED
PERFORMANCE
FOR NZEB
NEW PRODUCT
2018

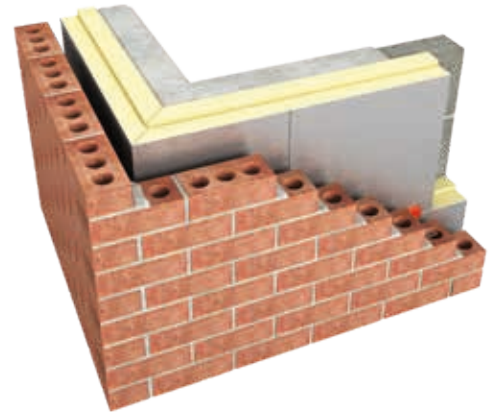
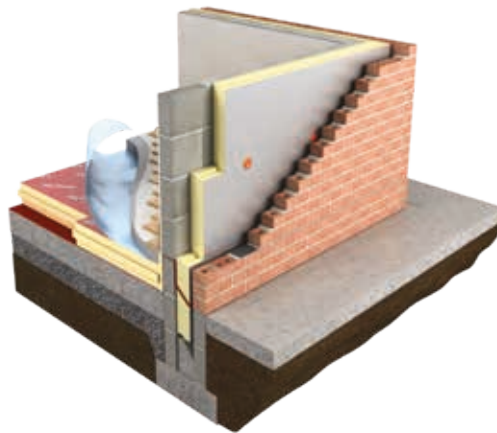
XtroLiner
Superior Performance PIR Insulation

XtroWall Plus 110

Insulation for
Partial Fill Cavity walls

XtroWall Plus is a superior performance insulation with Agrément declared lambda value of 0.020 W/mK and an enhanced Euroclass C fire classification. It is faced with a robust PIR aluminium foil and is available with engineered jointing to deliver improved Thermal Bridging detailing.

This lower Lambda improves U-Values and meets Zero Carbon standards, proving an excellent choice for passive and low energy builds. XtroWall Plus can achieve a passive of U-Value 0.15 W/m²K in a traditional cavity wall. Building with XtroWall Plus, a residual cavity is maintained, offering excellent protection against wind driven rain.



Specification Clause

The partial fill cavity wall insulation shall be Xtratherm XtroWall Plus manufactured to EN 13165 by Xtratherm, comprising a rigid modified Polyisocyanurate (PIR) core with textured robust low emissivity foil facings and engineered shiplapped jointing. XtroWall Plus ___mm with Agrément declared Lambda value of 0.020 W/mK to achieve a U-Value of ___ W/m²K for the wall element. To be installed in accordance with instructions issued by Xtratherm.

Xtratherm PIR achieves an A+ rating under the BRE Green Guide.



Refer to NBS clause F30 155, F30 12



Thermal Resistances

Thickness (mm)	R-Value (m² K/W)
110	5.5

Resistance 'R' Values

The resistance value of any thickness of Xtratherm insulation can be ascertained by simply dividing the thickness of the material (in metres) by its agrément declared lambda value, for example: Lambda 0.020 W/mk and thickness 110mm -> 0.110/ 0.020 ->R-Value = 5.5. In accordance with EN 13165, R-Values should be rounded down to the nearest 0.05 (m² K/W).

Data Sheet

Achieves 0.15 U-Value in 150mm Cavity

Improved Lambda value 0.020 W/mK

Euroclass C fire classification

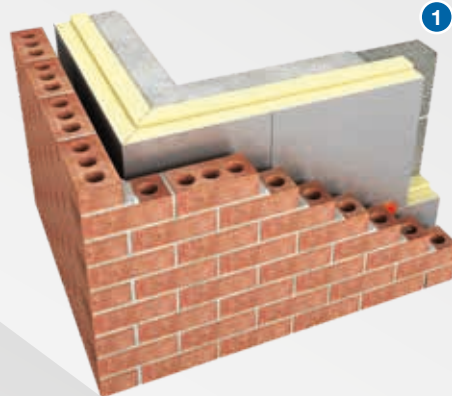
Engineered Jointing

Corner Panels & Cavity Closers:
Reduced Thermal Bridging

Clear Cavity Maintained

1

The XtroWall Plus Cavity Wall System includes an optional pre-formed corner panel that folds to 90 degrees to effectively insulate a junction that is normally vulnerable to Thermal Bridging and cold spots.



2

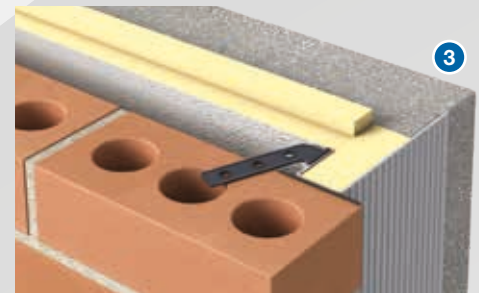
The XtroWall Plus engineered jointing offers a practical on-site solution that results in a more robust continuous layer of insulation, minimising the threat of Thermal Bridging and improving the overall U-Value of the wall.



3

The textured robust low emissivity foil facing on XtroWall Plus improves the thermal performance of the wall. The residual cavity is the most effective method of preventing wind-driven rain penetrating a wall from the outside.

A residual cavity is the air space that remains when XtroWall Plus is placed against the inner leaf of the cavity of a wall. The recommended residual cavity width required is 40mm in accordance with Irish Building Regulations, however a reduced cavity may be permissible in certain circumstances. A 50mm residual cavity is typically required in Northern Ireland.



XtroWall Plus

Length (mm)	1200
Width (mm)	450
Thickness (mm)	110

Other thicknesses may be available depending on minimum order quantity and lead time.

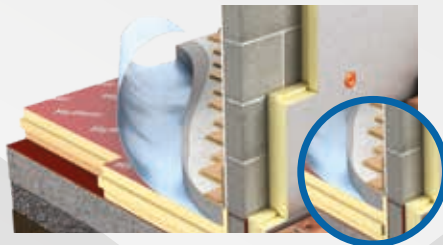
Property & Units

Thermal Conductivity	0.020 (W/mK)
Compressive Strength	>120 (kPa)
Reaction to Fire	Euroclass C-s2, d0

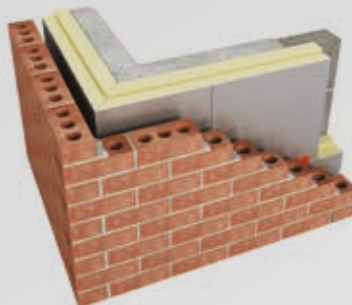
Xtratherm CE Declaration of Performance (DoP) for this product is available for download from our website.

Installation Guidelines

1. Under Eurocode 6/S.R. 325 it is recommended that no more than four courses of block are laid on the preceding skin before installation of the insulation. This allows for wall ties to be inserted accurately and without bending and thus distorting the physical characteristics of the wall ties. Ensure the wall is level and free of any protrusions before installing the insulation with all edges tightly interlocked.
2. Mortar should be struck from the inner cavity face of the block to ensure mortar squeeze is minimized on the cavity side. The two courses of blockwork can then be built, ensuring the mortar is struck back from the cavity face to prevent mortar squeeze.
3. Insert wall ties maximum 600mm centres one block course below DPC. Wall ties should incorporate retaining clips and be Agrément approved.
4. Secure cavity boards tight against inner leaf with retaining clip on wall ties. Boards should be installed with the tongue uppermost and joints should be tightly butted.
6. Maintain a 40mm residual cavity to suit all exposure zones. A 50mm residual cavity is typically required in Northern Ireland. In isolated circumstances where the cavity is obstructed, a minimum 25mm residual cavity should always be maintained and extra consideration should be given to fixings and weatherproofing. Any reduction in cavity width should be agreed with Building Control.
7. Place wall ties at maximum 900mm x 450mm centres, securing with a minimum of 3 wall ties per board.
8. Ensure block joints are fully bonded with unbroken mortar. Fix wall ties 225mm vertically and 150mm horizontally from face of unbonded jambs. Ensure wall ties and cavity are kept clean of mortar. Wall ties should be sloped downwards towards outer leaf.
9. A cavity board should be used to keep the cavity clean. XtroWall Plus corner boards and cavity closers may be fitted to provide robust detailing.
10. Newly erected masonry should be protected to prevent the mortar being washed out of the joints by rain. Walls should be prevented from becoming saturated by covering the top of the wall with waterproof sheets; this is particularly important to minimise the incidence of efflorescence and lime bloom. When any working platform is not in use, the inner board should be turned away from the wall to prevent the splashing of the wall face.



5. Ensure a minimum 150mm overlap with the floor insulation. The receiving block should be plumb to provide a flat surface to accept the insulation. As with setting out, installation should commence from adjacent corners using the XtroWall Plus pre-formed corner boards. Alternate corner boards will achieve the offset brick bonded pattern for the insulation.



ACDs must be followed to ensure that installation is in accordance with current Building Regulations and accounted for in the energy calculation.

Handling, Cutting and Storage

Xtratherm insulation should be stored off the ground, on a clean flat surface and must be stored under cover. The polythene wrapping is not considered adequate protection for outside exposure. Care should be taken to protect the insulation in storage and during the build process.

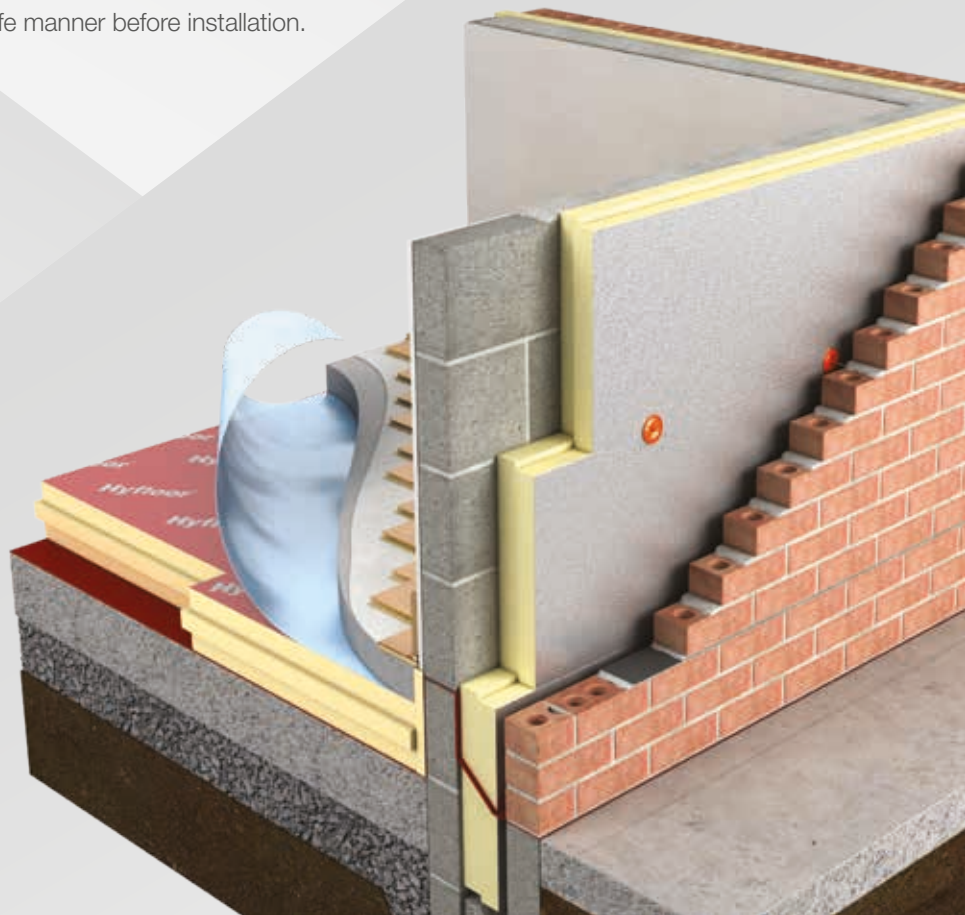
The insulation boards can be readily cut using a sharp knife or fine toothed saw. Ensure tight fitting of the insulation boards to achieve continuity of insulation as asked for within the ACDs. Appropriate PPE should be worn when handling insulation. Please refer to Health & Safety data sheets on our website.

The boards are wrapped in polythene packs and each pack is labelled with details of grade/type, size and number of pieces per pack.



Durability

Xtratherm products are stable, rot proof and will remain effective for the life span of the building, dependent on specification and installation. Care should be taken to avoid contact with acids, petrol, alkalis and mineral oil. When contact is made, clean materials in a safe manner before installation.



Typical U-Values

Table 1

U-Value calculations to EN ISO:6946

XtroWall Plus Insulation for Partial Fill Cavity Walls

- 19mm render
- 100mm outer leaf blockwork
- Low emissivity unventilated cavity (0.713 resistance)
- XtroWall Plus cavity wall partial fill PIR insulation
- 100mm inner leaf blockwork
- Plaster finish

Wet plaster finish: increase insulation thickness by 5mm

Wall ties taken as S/S wire at 3 ties per m²

XtroWall Plus 110 (0.020 W/mK)

Xtratherm Thickness (mm)

Wall Construction	U-Value
Block outer leaf with 100mm dense block inner (plastered)	0.15
Block outer leaf with 215mm dense block inner (plastered)	0.15
Block outer leaf with 215mm dense block inner (fair faced)	0.15
Block outer leaf with 215mm Hollow block inner (plastered)	0.15
Brick outer leaf with 100mm dense block inner (plastered)	0.15

Thermal Bridging

Fabric Energy Performance

The difference is in the detail

Fabric Energy Efficiency is based on 3 main principles:

1. U-Values
2. Thermal Bridging
3. Air tightness

What is Thermal Bridging?

Thermal Bridging occurs in small areas where the insulation level is reduced significantly compared with the remainder of the element. They may be 'Repeating,' 'Random,' or 'Non-Repeating.'

How is Thermal Bridging measured?

Thermal bridges are calculated as a linear thermal transmittance value - PSI (Ψ) measured in W/mK. SAP and DEAP are the software program used to calculate a dwelling's energy rating. Within this software, Thermal Bridging through junctions is accounted for as a 'Y-Value.'

Thermal Bridging and Airtightness

A comparison between the Y-Value and a hole in the construction



Y= 0.15

The equivalent of an open 'Garage Door' 2.1m x 3.3m (6.93m²) opening.



Y= 0.08

The equivalent of an open 'Patio Door' 2.1m x 1.8m (3.78m²) opening.



Y= 0.03

The equivalent of an open 'Window' 1.25m x 1.25m (1.56m²) opening

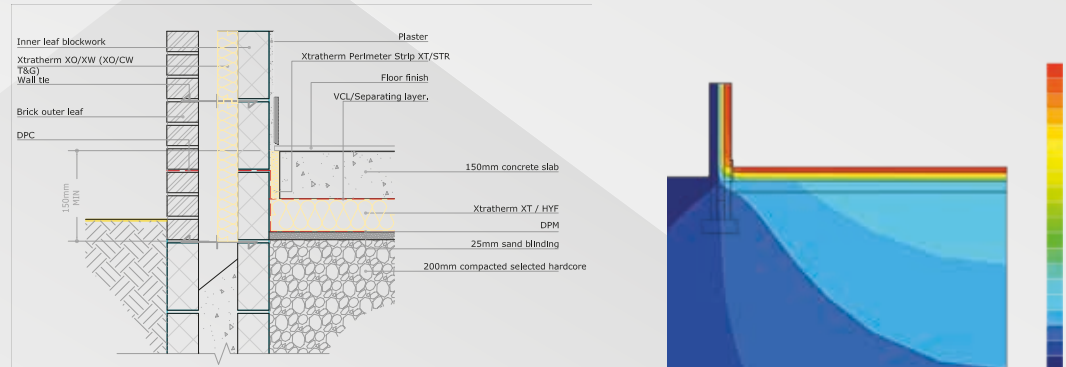
Our innovative range of insulation products deliver the U-Value requirements to meet Passive standards and building regulations, but it's not just about U-Values any longer.

How the system builds, how it interconnects at junctions and how it is witnessed and confirmed on site is as equally important. Good detailing delivers benefits:

- + More energy efficient building with lower running costs.
- + Less chance of condensation and mould forming at poorly detailed junctions.
- + A more cost effective method of achieving a low energy building.

Thermal Bridging

To achieve good detailing, Acceptable Construction Details (ACDs) should be followed during the planning, design and build process.



Xtratherm PSI Values










Using Acceptable Details

Acceptable Details	Block Type	110mm PSI
1.01a GF	Dense 1.13	0.165
1.01b GF	Med 0.33	0.088
1.01b GF	Light 0.20	0.061
1.23.2 Lintel Close-R	Dense 1.13	0.004
1.23.2 Lintel Close-R	Med 0.33	0.003
1.25 Jamb Close-R	Dense 1.13	0.003
1.25 Jamb Close-R	Med 0.33	0.002
1.26 Sill Forward	Dense 1.13	0.025
1.26 Sill Forward	Med 0.33	0.024
1.27.1 Corner	Dense 1.13	0.043
1.27.1 Corner	Med 0.33	0.036

For further information on this topic: Xtratherm has published Thermal Bridging guidance, request your copy from our technical department. Further certificates are also available for download from our website.

Xtratherm has an extensive library of downloads available on our website.

These include the ACDs, BIM files, CAD drawings and Agrément certificates. Xtratherm also offers CPD training on Thermal Bridging as well as a wide variety of building regulation topics.

 <p>Brochures — Download brochures for all Xtratherm products.</p>	 <p>Certs & DOPs — See facts & figures on how Xtratherm performs.</p>	 <p>CPD Presentations — Find out more about Xtratherm CPD offerings in the Xi Academy.</p>
 <p>ACDs (PDF) — Download Xtratherm's Accredited/Acceptable Details for Construction (ACDs).</p>	 <p>Packing Lists — Get size and dimension specifications.</p>	 <p>Education — Xtratherm have developed educational resources for secondary and third level colleges.</p>
 <p>ACDs (CAD) — Download CAD files of Xtratherm Products and Accessories.</p>	 <p>BIM Files — Download BIM objects of Xtratherm Products and Accessories.</p>	 <p>Sustainability — Find out more about Xtratherm's Corporate Sustainability Strategy.</p>

Expect More **KNOWLEDGE**

At Xtratherm we understand the importance of giving our customers the best technical advice.

We have taken the unique industry step of training every one of our technical team that deals directly with our customers, to the highest industry standards of competency in U-Value calculation and condensation risk analysis. We have Thermal Bridging covered also under the BRE/NSAI Thermal modelling competency scheme, using the most comprehensive 3D software available.

Our team and products are certified in the UK and Ireland and through the following certifications bodies:

- BRE Thermal bridging modelling competency certification
- NSAI Thermal modelling competency scheme
- TIMSA-BBA competency scheme for U-Value calculation and condensation risk analysis
- BBA and NSAI certification of the Xtratherm insulation boards
- SAP and DEAP energy assessment

Our technical team can also provide:

- Thermal calculations
- Technical advice on building regulations in the UK and Ireland
- Technical papers on a variety of topics
- Certified CPDs
- BIM modelling
- NBS Specifications
- Educational resources for technical secondary and tertiary colleges

Please refer to the Resources section of our website for more details



The **Xtratherm** Innovation Centre

The Xtratherm exhibition space and training academy has been developed to assist construction professionals in understanding the principles of specifying and achieving on-site, best practice insulation standards for new dwellings, commercial envelope solutions and refurbishment projects.



Get in touch

Dedicated
Technical Team:
UK : 0371 222 1055
ROI: 046 906 6050

Thermal Calculations, Technical
Advice or to arrange a technical visit:
info@xtratherm.com

Request a CPD:
cpd@xtratherm.com



PLATINUM SERVICE

Construction professionals can rely on the expertise and support of the Xtratherm team.

The Xi Platinum Service gives building professionals the highest level of support from design stage to delivery of real performance on site through the assurance of a validation process from calculation to installation.

For further information and to register for the Xi Platinum Service email

xiplatinum@xtratherm.ie

The Benefits

- | | |
|--|--|
| + Consultation Service with project dedicated Xtratherm Technical expert | + Pre-tender Xtratherm spec check |
| + Certified U-Value Calculations / Condensation Risk Analysis | + Personal consultation and access to on-line training |
| + Off plan BER/SAP Calculation consultation service* | + Prompt response – all project sizes |
| + Fabric performance specifications to achieve 'A' rated building | + Installation Training |
| + Pre-design Assessment of details & Y-Value performance | + Installation validation process with install team |

* In association with project Energy Assessor

The Xi Range

The enhanced features of the Xi range deliver not only excellent U-Values but enhanced thermal bridging detailing; all performances are backed by 3rd party certified calculations and certification, delivering not just performance but assurances you can rely on.

Xi Platinum Service

With the Xi range of products you can access the Xi Platinum Service on projects where at least one other Xi product is used along with a Xi cavity wall system to achieve a U-Value of $<0.15 \text{ W/m}^2\text{K}$.

With Xtratherm collaborating as part of the project team the validation process assists you in ensuring your expectations are delivered.



Xtratherm
innovation

When more comes as standard.



Xtratherm®

More than insulation

The Sustainable Solution

Specifying Xtratherm is a real commitment to minimising energy consumption, harmful CO² emissions and their impact on the environment. Using our products is one of the most effective ways to reduce energy consumption – in fact, after just eight months the energy they save far outweighs the energy used in their production. In addition, our manufacturing facilities operate to an ISO 14001 certified Environmental Management System.

The BRE Green Guide

The 2008 Green Guide to Specification produced by the BRE gives Xtratherm Insulation products a rating of A or A+. Green Guide ratings are used to gain credits in BREEAM (BRE Environmental Assessment Method) for non-residential buildings, and under 'Mat 4 – Insulation' the first credit requires the building to have an Insulation Index of 2 or greater – only achievable if the weighted average rating of the insulation is A or A+. This shows that all our products have been made with materials that have been responsibly sourced. The standard sets out organisational governance, supply chain management and environmental and social aspects that are verified and ensure responsible sourcing of materials.

Responsible Sourcing

Xtratherm has BES 6001 certification for responsible sourcing. The second BREEAM credit under that category is based on responsibly-sourced materials – at least 80% of the total insulation used in roofs, walls, ground floors and services must meet any of tier levels 1 to 6 in the BREEAM table of certification schemes. Our Environmental Management System is certified under EN ISO 14001, and our raw materials come from companies with similarly-certified EMS (copies of all certificates are available for BREEAM assessments). This level of responsible sourcing meets tier level 6 in the BREEAM table.

Global Warming and Ozone Depletion

All Xtratherm Insulation products use CFC- and HCFC-free materials, and are manufactured using a blowing agent with a low GWP and zero ODP.

Good workmanship and appropriate site procedures are necessary to achieve expected thermal and airtightness performance. Installation should be undertaken by professional tradespersons. The example calculations are indicative only, for specific U-Value calculations contact Xtratherm Technical Support. Xtratherm technical literature, Agrément certifications and Declarations of Performance are available for download on the Xtratherm website. The information contained in this publication is, to the best of our knowledge, true and accurate at the time of publication but any recommendations or suggestions which may be made are without guarantee since the conditions of use are beyond our control. Updated resources may be available on our websites. All images and content within this publication remain the property of Xtratherm.



PLATINUM
SERVICE

Specifying products supported by the Xtratherm Platinum Service gives you the highest level of assistance from design stage to delivery of real performance on site, through the assurance of a validation process from calculation to installation.

Xtratherm Limited

Liscarton Industrial Estate
Kells Road, Navan
Co. Meath, Ireland
C15 NP79

T +353 (0)46 906 6000
F +353 (0)46 906 6090

info@xtratherm.ie

xtratherm.ie

ISO 9001 | Quality Management Systems

ISO 14001 | Environmental Management Systems



Xtratherm, part of UNILIN group.